



VACUUM
DEGASSER

VIRADEG COMMISSIONING

VIRA

Scope of Delivery

i. ViraDeg

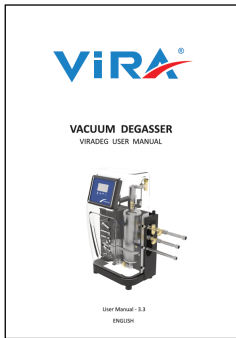


iii. Flex Hoses

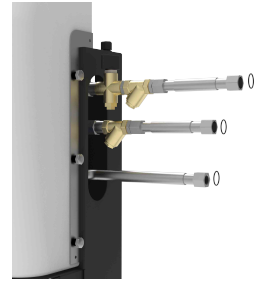


- If your product does not have a refill feature, you will receive two hoses.

ii. User Manual



iv. Build-Up Kit



Warning!

- In case of doubt, always contact the supplier
- In case of a heavily contaminated system fluid, install a dirt separator or filter in the main return line of installation

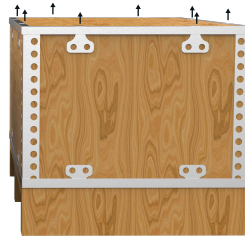
This booklet is designed for unpacking, commissioning and troubleshooting of ViraDeg model Vacuum Degassers manufactured by Vira Isı ve Endüstriyel A.Ş.

The required technical details can be found in the user manual that comes with the product or on our website www.viraisi.com

Vira Isı ve Endüstriyel Ürünler A.Ş. reserves the right to change these terms and conditions at any time without prior notice. In the event that any changes are made, the revised terms and conditions shall be posted on this website immediately.

Unboxing

- i- Loosen the screws and remove the cover in the arrow direction.



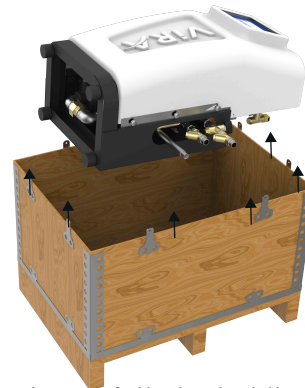
- ii- After removing cover, degasser will be seen in horizontal position.



- iii- To be able to remove degasser out of box, loosen the bolts at the bottom.



- iv- Remove the degasser out of the box carefully in the arrow direction.



- v- When carrying the degasser in a vertical position, carry it carefully by holding it from the ceiling.

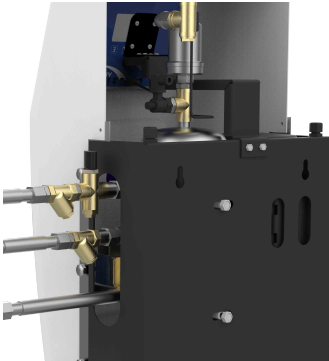


Assembly

i- Flex Hoses Mounting
The units are connected to the installation by Flex hoses. There must be one meter horizontal distance between the inlet and outlet line. The units with refill feature have the third Flex hose connection. Only for V3-R Model this third flex hose is supplied in the box. For other models all hoses is supplied connected to the unit.



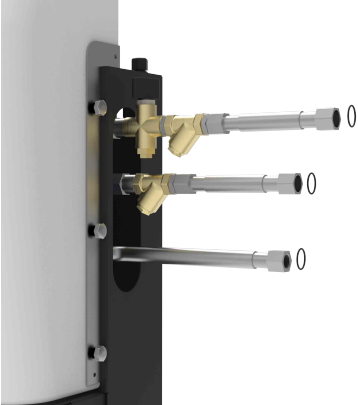
ii- Wall Mounting
Wall hanging is only available for the V3 model. Larger products should be positioned on the floor on product feet.



iii- Floor Mounting
If the unit is used as floor standing, use threaded legs supplied with the unit.



iv- Gaskets
Use gaskets supplied with the unit. While making flex hose connection.



Commissioning

1. Degasser inlet hose is connected to the installation. The outlet hose is left open to the atmosphere to discharge air in the degasser.
2. The inlet valve is turned to the closed position.
3. The energy connection of the degasser is made and the system is energized.
4. By pressing the MENU button on the controller to make the necessary settings in accordance with the installation.
 - Max. Pressure
 - Refill Min. Pressure
 - refill Max. Pressure
 - Working Hours
 - Language etc.
5. The MENU function is accessed by pressing the ENTER button and the TEST function is started.

Input Solenoid Valve is opened by pressing Down Arrow button and switching "Int OFF" (InternalOFF) to "Int ON"

The inlet valve is slowly opened to fill the degasser with water in a controlled manner. The water filling process is continued until there is no air remaining in the degasser (until some water flows from the degasser outlet hose).
6. Press down arrow button on controller again and make INT-OFF to close the input solenoid valve.
7. Degasser outlet line is connected to the system and exit valve is opened.
8. Press MENU to SYSTEM ON / OFF and select "SYSTEM ON.
9. Press the MENU(ESC) button to exit the MENU and start the degasser.

Note: In V9 models, the system can also be vented using the air vents on the vacuum tube and on the pump. In the first filling phase, when the inlet and outlet hoses are connected, air vents points on the pump and vacuum tube must be open and after the water comes out of the valves, they must be closed.

Troubleshooting

1.1 No Water (ER01)

When the product is started, it waits for the tube to be completely filled and pressurised within 360 seconds. If pressure is not built up within this period, a "No Water" error will occur.

In this case, ensure that there is water in the system and that the valves connected to the inlet line are fully open.

You can check the tube pressure with the pressure gauge attached to the cylinder.

If the pressure gauge indicates pressure in the tube but you still receive the "No Water" error, you can minimize the pressure reading by pulling the pin on the "pressure switch" toward you and turning it in the direction of "-" to start the product.

1.2 Sensor Error (ER02)

When the pressure sensor can't get any information or receives wrong information from the system, it gives a sensor error. The pressure sensor may be faulty or disconnected. Check connections, replace the sensor if faulty.

In this case, a red light will be on the screen, but the product will continue to operate. Until this issue is resolved, the product will not be able to automatically refill.

1.3 High Pressure (ER05)

This occurs when the system pressure is higher than the factory settings or the SET value you entered. In this case, we know that the system pressure is higher than it should be. The product will notify you by turning on a red light on the display, but the product will continue to operate.

1.4 Standby

Since there is no air in the system, the degasser stops automatically. After 12 hours, it works again and checks the air of the installation. It discharges the air in the installation and switches to standby. If the device remains in standby mode: 'TotalAirvent' from the 'RunningLogs' menü must be checked and the number of purged air must be monitored. If the number of air purge does not increase by more than 10 in every 12 hours, the air sensor and its connections must be checked.



Vira Isı ve Endüstriyel Ürünler A.Ş.

ViraDeg producer

Address ; Ikitelli OSB, Metal İş Sanayi
11. Blok No.37-39 / Basaksehir / Istanbul

Phone : +90 212 549 57 70

Web : www.viraisi.com
